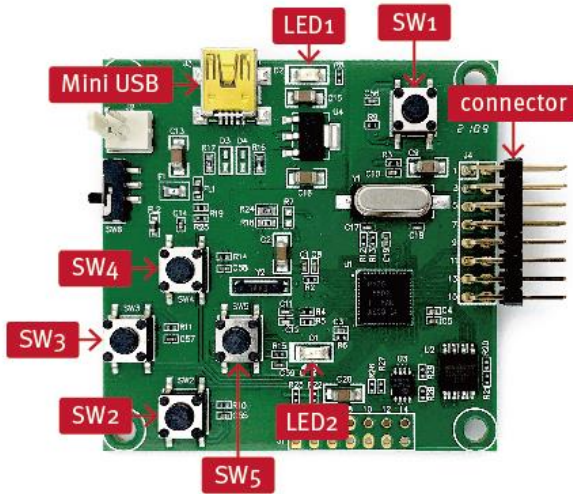


Panel and THOR EVK Connection SOP

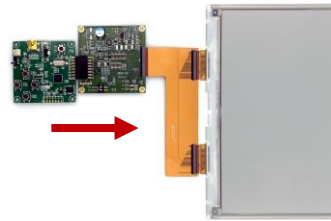
Demo Kit Hardware Description



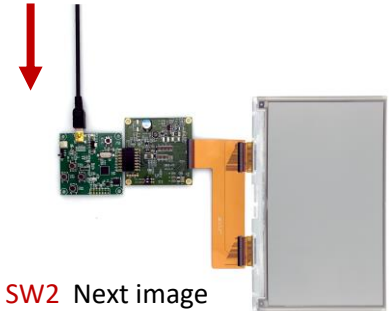
Button	Function
SW1	Reset
SW2	Next image
SW3	White image
SW4	Previous image
SW5	White/Black/Red/Yellow/ Blue/Green image

Assembly and Operating Instructions

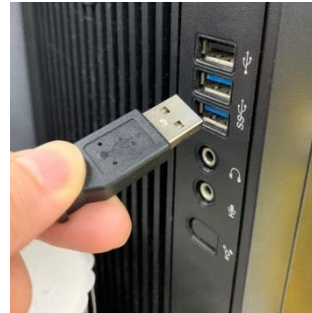
① Attach the panel to THOR



② Connect the mini-USB to THOR



③ Connect the mini-USB to USB power



④ Press **SW2** Next image

⑤ Press **SW3** White image

⑥ Press **SW4** Previous image

⑦ Press **SW5**

White/Black/Red/Yellow/Blue/Green image

Disassembly Instructions

① Disconnect the mini-USB from USB power

② Disconnect the mini-USB from THOR

③ Detach the panel from THOR