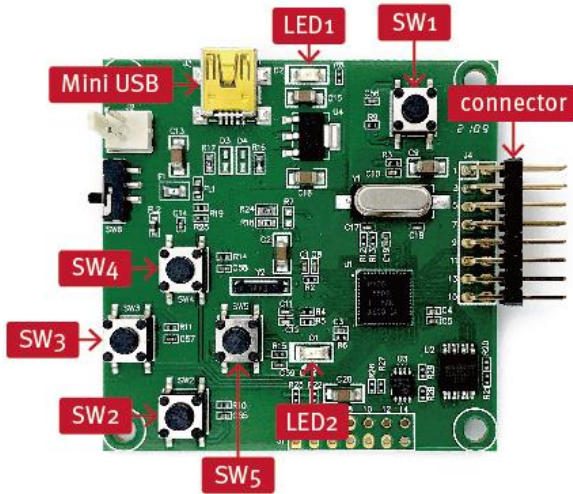


Panel and THOR EVK Connection SOP

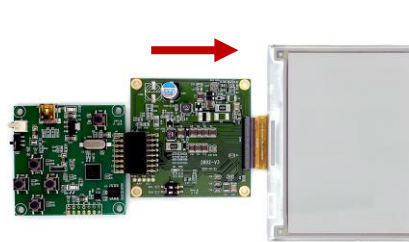
Demo Kit Hardware Description



| Button | Function |
|--------|------------------------------|
| SW1 | Reset |
| SW2 | Next image |
| SW3 | White image |
| SW4 | Previous image |
| SW5 | White/Black/Red/Yellow image |

Assembly and Operating Instructions

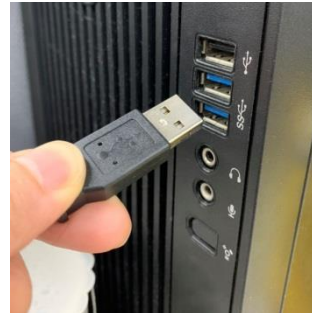
① Attach the panel to THOR



② Connect the mini-USB to THOR



③ Connect the mini-USB to USB power



④ Press **SW2** Next image

⑤ Press **SW3** White image

⑥ Press **SW4** Previous image

⑦ Press **SW5** White/Black/Red/Yellow image

Disassembly Instructions

① Disconnect the mini-USB from USB power

② Disconnect the mini-USB from THOR

③ Detach the panel from THOR